



www.dreamzone.co.in

INTERIOR Architecture and Design

Dreamzone

Basaveshwaranagar

1. I'm interested in IAD, but I'm not creative or talented. Can I join the course?

No one is a born designer! Design skills are acquired through good training and enthusiastic learning. Do not hesitate! You can become a great designer!

2. What makes DreamZone IAD course special?

Faculties : All faculties are qualified architects/ interior designers

Reference books : Refer 600 pages (2 volumes) of world class reference material developed by DreamZone, in association with top interior designers in India.

IAD Resource centre : A good collection of books, reference guides, supplier catalogues and material samples.

Workshop : A self contained workshop for model making.

Design Forum : Invited lectures from leading architects, interior designers and manufacturers to update you with the latest trends and techniques.

IAD Resource Database : An up-to-date database of prominent contractors, architects, interior designers and suppliers.

Project Planning & Management : Basics of Project Planning & Management are taught as part of the course.

3. What kind of teaching strategies are adopted in this course?

The course presents various aspects of IAD to students in a studio based learning environment. The classes are a mixture of lecture and practice sessions.

We take the following approach

- Motivate students to learn, either independently or in groups

- Encourage exploration of ideas and research

- Provide exposure to appropriate cognitive and professional skills

4. How is the course curriculum structured?

The curriculum is developed in association with leading interior design firms in the country, after a detailed research of customer's unmet needs.

The curriculum

- Follows a logical sequence

- Is challenging but even paced

- Has equal number of compulsory practice sessions to reinforce thorough learning

5. Are the faculties good enough?

All DreamZone trainers are full time employees who demonstrate exceptional commitment to our customers. This enables us to continuously re-train our trainers to keep up the quality of course delivery.



Interior Design

Interior Design is the creation and organization of interior spaces to perform a specific function within an architectural environment.

An interior is a space which is enclosed by walls, floors & ceilings. It has entries, exits, openings such as doors and windows etc. These enclosing elements may be composed of a number of materials and countless shapes.

To design is to conceive, envision, plan and compose things.

The design process includes communicating the design concept to clients and other professionals engaged in implementing the design, appropriate use of materials that result in functional, aesthetic and psychological enhancement of an interior space.

Interior design is a specialized branch of architecture. The best buildings and the best interiors will have no obvious disparity between the elements that make up the totality. That is why worldwide this discipline is well known as “Interior Architecture & Design (IAD)”.

Need for Interior Designers

Before the 20th century, the interiors made considerably simpler demands on designers in terms of functionality. By and large, technologies and processes of each profession by themselves were less categorized and specialized. Hence, in most cases the architects themselves played the role of an interior designer!

However, over the years, the practice of interior design witnessed a steady development of specialization. It is no longer possible for an architect or an interior designer to be an expert in all the aspects that make up a building.

While architect usually orient themselves with the overall design of buildings, interior designers are concerned with the more intimately scaled aspects of design, specific aesthetics and the functional and psychological aspects of the overall design.

Introduction to Interior Architecture & Design Basic Design

Basic Design Elements

- Form
- Shape
- Color
- Texture
- Light



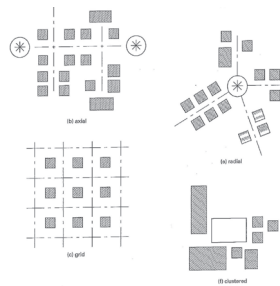
Design Principles

- Proportion
- Scale
- Balance
- Harmony
- Unity & Variety
- Rhythm
- Emphasis



Spatial Organization

- Centralized Organization
- Linear Organization
- Radial Organization
- Clustered Organization
- Grid Organization



Practices

Composition using Basic Design Principles

Drawing

- Free Hand Sketching
 - Pencil rendering
 - Pen rendering
- Drawing equipments
- Lettering
- Scales
- Geometrical constructions
- Dimensioning
- Plan, Elevation and Section
- Projections
 - Orthographic projections
 - Axonometric projections
 - Oblique projections



Perspective

- One-Point Perspective
- Two-Point Perspective

Perspective

- Exercises free hand drawing
- Exercises on Lettering, Scales, Plans
- Exercises on Projections, Perspective



Building Materials

- Stone
- Clay Products
 - Brick
 - Tiles
- Earthenware
- Cement
- Mortar
- Concrete
- Timber
- Plastics
- Glass
- Paints
- Flooring Tiles
- Gypsum
- Claddings
- Practices



Sample Collection of Building Materials





Design Process

- Data Collection
- Analysis
- Synthesis
- Evaluation
- Execution
- Practices



Design process for projects like Office, Restaurant etc.

Design Elements

- Flooring
- Walls
- Ceiling
- Arches
- Lintels
- Windows
- Doors
- Carpentry
- Staircase
- Ramp
- Practices



Exercises on types & detail of flooring, partitions, false ceiling, doors, windows, staircases etc

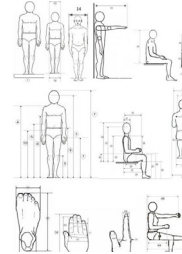
Space Planning

- Living Room
- Dining Room
- Bed Room
- Bath Room
- Kitchen

Human Dimensions

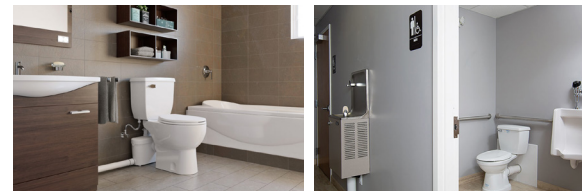
- Anthropometric
- Accessibility and Barrier-free codes
- Practices

Anthropometric details for various projects



Services - 1

- Plumbing
- Water Supply
- Drainage
- Plumbing Systems
- Sanitary fittings
- Bathroom accessories
- Material application
- Anthropometric



Lighting

- Factors affecting Light
- Natural Lighting
- Artificial Lighting
- Lighting Fixtures
- Lighting accessories
- Electrical, data and telecommunication systems



Practices

Exercises on Lighting and Plumbing

Design

Single room project – like Living room, Dining room, Kitchen, Toilet, Bedroom etc.

Practices

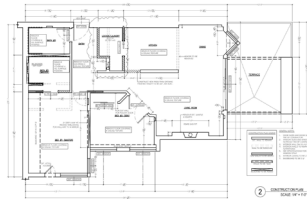
Plan, Section & Detailing for the design projects



Computer Aided Design

Introduction

- History of Drawing
- Engineering Drawing and Design
- Engineering Drawings Today
- Computer-Aided Design and Drafting
- Computer-Aided Design and Manufacture
- The Educational Value of Engineering Drawing
- Organization of Text



Manual Drawing Equipments and Usage Scales

Principles of Engineering Drawing

- Drawing Sheets
- Title Block
- Scales
- Line Thickness



Assignment (Plan Drafting)

Computer Aided Design and Drafting

- File format
- History of *.dwg
- Printers and Plotters
- Digitizing
- Introduction to CAD Software

Projections

- Principles and Methods of Projects
- First Angle Projection Vs Third Angle Projections
- Isometric Projections
- Perspective Projections

Assignment (Isometric & Perspective Projections)

Sheet Layout

Annotations

- Lettering and Dimensions

Geometric Tolerance

How to read a Construction Plan

- Site Plan
- Floor Plan
- Elevation and Section Views

Overview of Vector Graphics

Introduction to AutoCAD

- History
- GUI

File Management

Drawing Settings

Preparing Orthographic Drawings

Assignment (Plan, Elevation & Section Views)

Object Selection Methods

Modifying the existing drawings

Isometric Drawings

Perspective Drawings

Assignments (Building Elevation and Room Interiors: Perspective View)

Object Properties

Annotations – Text

Display Control

Layer management

Hatching Utilities

Inquiry Commands

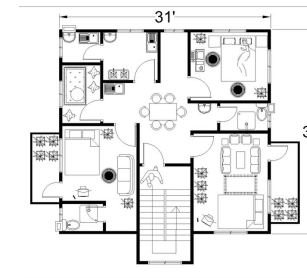
Annotations – Dimensions

Construction Lines

Plotting

E-transfer

Assignments



Computer Aided Image Rendering & Compositing

Introduction

- Vector and Raster
- Color Correction & Editing
- Resolution
- Printing Document
- Web

File Formats

- BMP, GIF, JPEG, PNG, PSD, TGA, TIFF, PDF

Marquee Tools

- Rectangular, Elliptical
- Single row, Single column

Lasso Tools

- Polygonal, Magnetic
- Magic wand, Quick Selection
- Assignment (Selecting the image using various tools)

Crop, Slice Tools

Eyedropper Tool

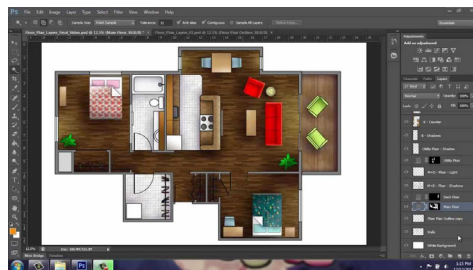
- Color sampler tool
- Ruler, Note & Count tool

Transforming Images

- Scale, Rotate, Skew
- Distort, Perspective, Warp

Color

- Foreground and background colors
- Paint bucket, Pattern fill
- Painting tools
- Pencil tool
- Color replacement tool



Brush Tool

- History brush tool
- Art history brush tool
- Healing brush tool
- Spot healing brush tool
- Patch tool & Red eye tool

Clone Stamp Tool

- Clone stamp tool
- Pattern stamp tool

Eraser Tool

- Background Eraser tool
- Magic Eraser tool

Blur Tool (Effects Tool)

- Sharpen & Smudge tool

Dodge Tool (Effects Tool)

- Burn & Sponge Tool

Gradient Tool

- Linear, Radial, Angle gradient
- Reflected & Diamond gradient

Assignment (Creating greenery, landscaping & Decorating layouts)

Vector Tools

- Pen tools
- Free form pen tool
- Add & Delete anchor point tool
- Convert point tool
- Selection tools
- Path & Direct selection tools
- Custom shapes

Text Tool

- Horizontal & Vertical
- Horizontal type mask & Vertical type mask

Shapes

- Rectangle & Rounded Rectangle Tool
- Ellipse, Polygon & Line tool
- Custom shape tool
- Assignment (Creating objects – furniture)

Working with images

Color correction, image adjustments

- Brightness & contrast
- Levels & Curves
- Exposure : Offset, Gamma Correction

Vibrance

Hue/Saturation

- Color balance, Black & white
- Photo filter, Channel mixture
- Invert, Posterize & Gradient map
- Selective color
- Shadow/highlights, Variations
- Saturation & Desaturate colors
- Match colors & Replace color
- Equalize & Apply image
- Rotate canvas

Assignment (Creating Fire effects, Converting black & white into color)



Interior Architecture & Design

Autodesk 3Ds Max

Layer

- Layer styles
- Blending & Group
- Mask & Hide
- Flatten image & Merge
- Link & Unlink layers
- Arrange, Align, Distribute

Image Modes

- Bitmap mode
- Grayscale mode
- Duotone mode
- RGB & CMYK
- Assignment (Enhancing rendered images)

Filter Gallery

- Artistic filters & Blur effects
- Brush strokes filters
- Distort filters & Noise filters
- Pixelate filters & Render filters
- Sharpen filters & Sketch filters
- Stylize filters & Texture filters
- Vanishing point
- Assignment (Creating textures for Interiors)

Other Applications

- PDF presentation
- 3D, Basics, Material settings, Render Settings

Automate

- Fit image
- Merge HDR
- Photo merge
- Assignment
- Creating & Optimizing Web layout

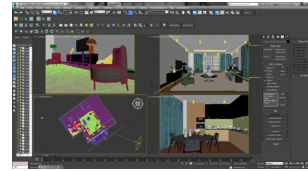
Computer Aided Design Visualization

Introduction to 3Ds Max

- Project work flow
- Interface & View port controls
- File Formats

Primitives

- Standard Primitives
- Extended Primitives
- Keyboard Entry



Selection Tools

- Selection Methods
- Transforms and Co-ordinate Systems

Utility Tools

- Unit Setup
- Hierarchy
- Snaps
- Align & Quick tool
- Mirror, Array & Spacing Tools
- Group & Ungroup
- Layer Manager

Practice Project Worksheet

Parametric Modifiers

- 3D Modifiers
- Bend, Taper & Twist
- Noise, Relax & Skew

Shapes

- 2D Shapes and Modifiers

Shapes

- Shape Boolean
- Loft
- Deforming Loft Objects – Scale, Twist
- Teeter, Bevel, Fit

Practice Project Worksheet

Lights

- Standard Lights
- Omi, Target & Free spot
- Target & Free Direct
- Sky Light

Photometric Lights

- Free & Target Light

Clone

Alignments

- Copying Object
- Array
- Spacing Tool
- Normal Align
- Align view
- Align Camera

Loft Objects

Practice Project Worksheet

Materials

- Material Editor – Tools in Material Editors
- Shading Basic Parameters
- Extended Parameters
- Saving Materials

Camera

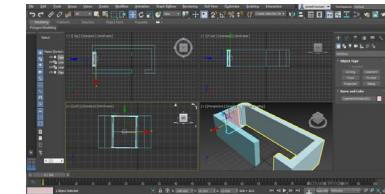
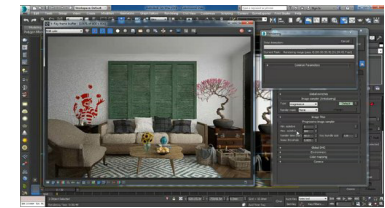
- Camera – Free, Target
- Depth of Field, Motion Blur
- Animating Camera in a path & Free Movement
- Navigating the Camera using keyboard

Rendering - Scanline, Mental Ray

- Rendering basics – Out image sizes
- Export as JPEG
- File handling, Archive
- Summary Info
- View Image File
- Hold, Fetch

File Handling functions

Practice Project Worksheet

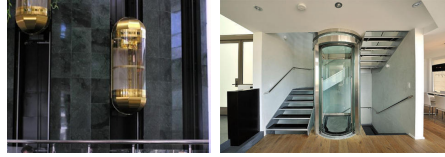


Interior Architecture & Design

Module 2

Design Elements

- Elevators
- Escalators
- Practices



Exercises on types and details of Elevators

Service - 2

- Air-conditioning
- Acoustics & Sound Insulation
- Water proofing, Damp proofing & Termite proofing
- Thermal Insulation
- Fire fighting
- Security systems



Practices

Exercises on types and details of services and collection of relevant product pamphlets.

Interior Landscape

- Elements & Properties of landscape
- Categories of Plants
- Design methodology
- Practices



Exercises on landscape design of office interiors etc.

Estimation & Specification

Practices

Estimation & specification for small projects

Professional practices, regulations, codes of conduct

Rules & Regulations of Indian Institute of Interior Designers (IIID)

Code of conduct

Project Management

Practices

Exercises on PERT, CPM

Furniture fixture and equipments

- Furniture
- Types of furniture
- Selection of furniture and fabrics
- Furniture dimensions



Furniture Styles

- Italian
- French
- American
- English
- Contemporary



Design

- Residence
- Commercial Space (office, showroom, hotel, restaurant etc.)
- Practices
- Plan, Section and detailing for the projects

Final Project

Practices

Plan, section and detailing for the chosen project

Computer Aided Design & Design Presentation
(AutoCAD, 3Ds Max, Photoshop)

Course Highlights

Evaluation : Projects & Subjects

Project : Every candidate must submit a project at the end of the training period

Site visits/Industry visits : Periodic site visits and industrial visits will be arranged by the centre

Practice sessions : Practice sessions and exercises to prepare you for the real world

Interior Architecture & Design

Course Duration – 480 Hrs

Regular :

2 hrs/ day

5 days/ week

Timings :

10:00 AM – 12:00 PM

12:00 PM – 02:00 PM

03:00 PM – 05:00 PM

Career Opportunities

The diversity of the course structure reflects the various career opportunities available to our students at the following sectors :

- Architectural firms
- Interior design firms
- Construction firms
- Builders and Promoters
- Furniture Manufacturers
- Project Managers
- Advertising Agencies
- Educational Services
- Set Design for Film and TV media
- Product supply industry
- Theatre Design
- Government Sectors
- Own Business or Freelancing
- Higher Studies

Fashion Design



Editing & VFX



Join Career Courses In

Interior Design



Imagination is the spark that ignites the fire of creativity

Web Design



2D/3D Animation



Graphic Design



Contact

9611824466, 9611834466

Address: 471, 3rd Floor, Above bata Showroom,
Near Pavithra Paradise, 3rd Block, 3rd Stage,
Basaveshwaranagar, Bangalore